



SOLUTIONS

Corporate Profile & Sales Programme





## COMPANY PROFILE

FPX solutions B.V. is a Dutch company with its head office in the Amsterdam region. It has two manufacturing units; i.e. in Rotterdam & Rijen. FPX also has a Middle East regional office and an assembly facility in Dubai, U.A.E. The company is focused on Water, Waste Water, Power, Irrigation and Industry sectors.



The group employs more than 100 full time employees who are engaged in Manufacturing, Sales, After market, Upgrades and Spare Parts as well as Service. FPX has products for Building Services (Residential & Commercial), Water Management, General Industry, OEM's, Machine Builders, Water & Sewage Treatment Plants. Its global operations are managed through strategic partnerships, agents and distributors, thereby easing business for customers and end users.

FPX is committed to value added solutions to its customers and cost-effective services. It offers System Consulting, Assembly, Commissioning, Repairs, Retrofit, Annual Maintenance Contracts and Installation Services for the following:



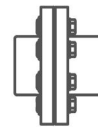
Water Treatment



Fluid Management



Valves



Mechanical Power  
Transmission



Power Generation



# OUR CAPABILITIES

FPX has a manufacturing plant in Rotterdam. This facility has been certified by Oil Majors for products supply in Refineries, Power plants & Petrochemical plants.

In this plant, pump performance testing for Horizontal as well as Vertical pumps is possible with power up to 1 MW. This facility can offer the following services:

- Design, drawings, Engineering, project management.
- Machining and Assembly
- Rotor Balancing
- Quality Control & Testing
- Refurbishment & Upgrade





## FIELD SERVICES

We offer service for the industrial equipment like pumps, valves, steam turbines, gensets, mechanical seals and more. You can count on our experts to provide you with sound advice on your service requirements. Whether you need a new installation and commissioning, upgrade, replacement or high-quality maintenance and repair service, you can rely on our service team to deliver quick, efficient and right solution in accordance with global standards.

Vibration analysis, laser, alignment, on - site issues, Field inspections and analyses, Condition monitoring are offered to clients as per their requirements.

## AFTER MARKET

FPX offers service for industrial equipment like Pumps (API, Non API, centrifugal and PD pumps), Turbines and Generator sets.







**WATER TREATMENT**





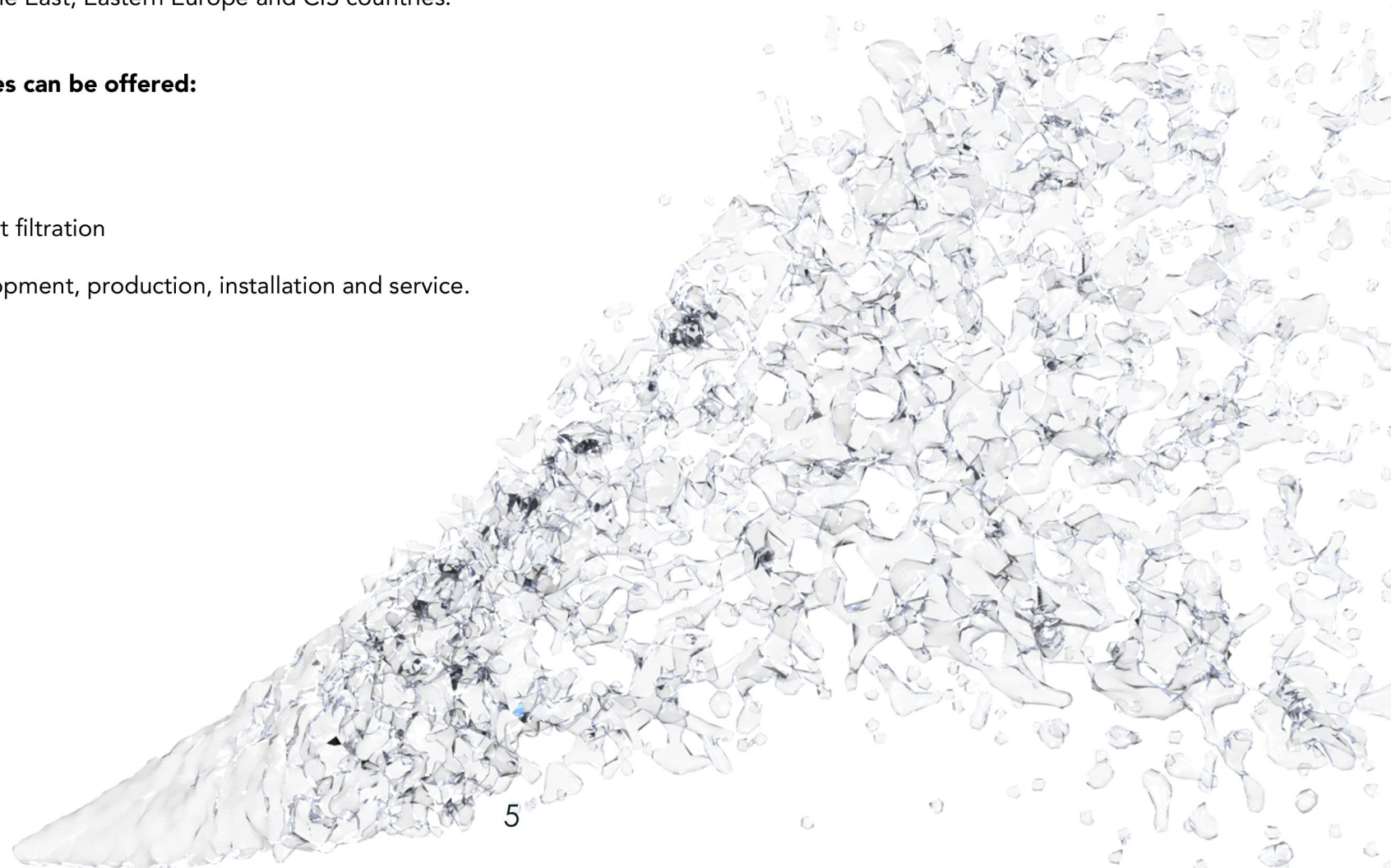
# WATER TREATMENT

We have more than 20 years of experience in the technology of Drinking Water, Waste Water and Process Water. We offer Water Treatment Solutions and have affordable, personalised solutions in Water Filtration and Water Treatment. We develop and produce equipment for various applications and as per the specific needs of our customers. We have established dedicated and repeat customers and have references over the year in the field of Water Filtration, Wastewater, Process Water and Consumption Water. We have supply references in Western Europe, Middle East, Eastern Europe and CIS countries.

## **Following technologies can be offered:**

- Reverse osmosis
- Ultrafiltration
- Dissolved Filtration
- Ozone and Ultraviolet filtration

We take care of development, production, installation and service.







## Reverse Osmosis (RO)

Reverse osmosis is used to remove dissolved materials in water. The most famous application is the production of drinking water out of sea water.

Reverse osmosis (RO) is a water purification technology that uses a semi-permeable (semipermeable) membrane to remove ions, molecules and larger particles out of water. FPX develops and produces customer-specific reverse osmosis installations for various applications. For example, we also supply ATEX RO installations for wastewater processing, off-shore and maritime applications. We also have various reverse osmosis rental installations available. The pilot installations are available to test your application on partial flow.

### Applications:

- Drinking water production
- Manure processing
- Wastewater
- Digestate
- Off-shore
- Marine



## Ultrafiltration

Ultrafiltration is used to remove undissolved materials out of water. The most famous application is the production of drinking water out of source or surface water.

FPX develops and produces customer-specific UF installations for various applications. Our UF legionella gatekeeper installations are BRL certified and we also offer these with a unique lease construction.

### Applications:

- Drinking water production
- Legionella gatekeeper systems
- Process water treatment
- Wastewater treatment
- Seawater Pretreatment for Reverse Osmosis
- Bacteria and virus removal in drinking water
- Pre-treatment water aquaculture

## Dissolved Air Flotation (DAF)

Dissolved Air Flotation (DAF) is used for waste water treatment and pre-treatment of process and drinking water.

FPX produces and supplies DAF units from 1 to 500 m<sup>3</sup> per hour for various applications. The DAF units are built in a resin-reinforced fiberglass construction to create a maximum area of application without the installation being affected by the medium. All metal parts in contact with the liquid are in SS316.

### Applications:

- Wastewater treatment
- Fat separators
- Protein separators
- Drinking water pre-treatment
- Surface water treatment



## Self-Cleaning Filters

Automatic self-cleaning filters in the suction and discharge sides of water treatment plants is one of FPX's specializations.

Our unique disc filter construction has a range from 0.5 micron to 200 micron and is the most efficient construction on the market. A pilot installation is available to test the application in the field. Capacity from 1 to 1000 m<sup>3</sup> per hour is no problem for this modular construction. Due to the all-plastic construction, these filters are very applicable to seawater or process water. Self-cleaning suction filters are indispensable when taking water in surface or sea. A self-cleaning construction is ideal because you no longer have to remove the filter from the water to clean it. A special construction for well pumps is available on request, which also includes the cooling jacket of the engine. Screens in SS316 are standard, duplex on request.





## Ozone Disinfection

Ozone is widely used for the disinfection and purification of waste water and drinking water.

When water contains micro-organisms, pesticides and / or organic compounds, it can be harmful to humans and animals. This water can be disinfected with the disinfection installations of FPX. Ozone acts as a powerful oxidizer for cell wall components of microorganisms. This destroys the cell (or cells) of the microorganism. Using this compound for disinfection is an efficient disinfectant and no storage of chemicals is required.

### Applications:

- Food industry
- Aqua culture
- Drinking water
- Wastewater
- Swimming pools
- Cooling water
- Agriculture

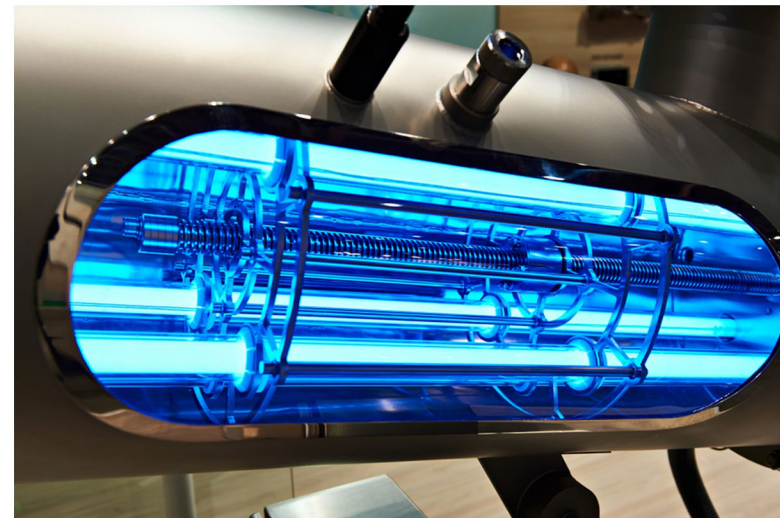
## Ultraviolet (UV)

Ultraviolet (UV) is widely used for the disinfection and purification of wastewater and drinking water.

Ultraviolet light penetrates through the cell wall of the micro-organism, as a result of which the micro-organism can no longer multiply. The cell nuclei are affected by the UV light. UV light denatures DNA that "inactivates" microorganisms. Inactivated microorganisms cannot reproduce or infect, rendering them harmless. The spectrum that causes this effect is called UV-C, an area between 240 and 280 nm.

### Applications:

- Food industry
- Drinking water
- Swimming pools
- Agriculture
- Aqua culture
- Wastewater
- Cooling water



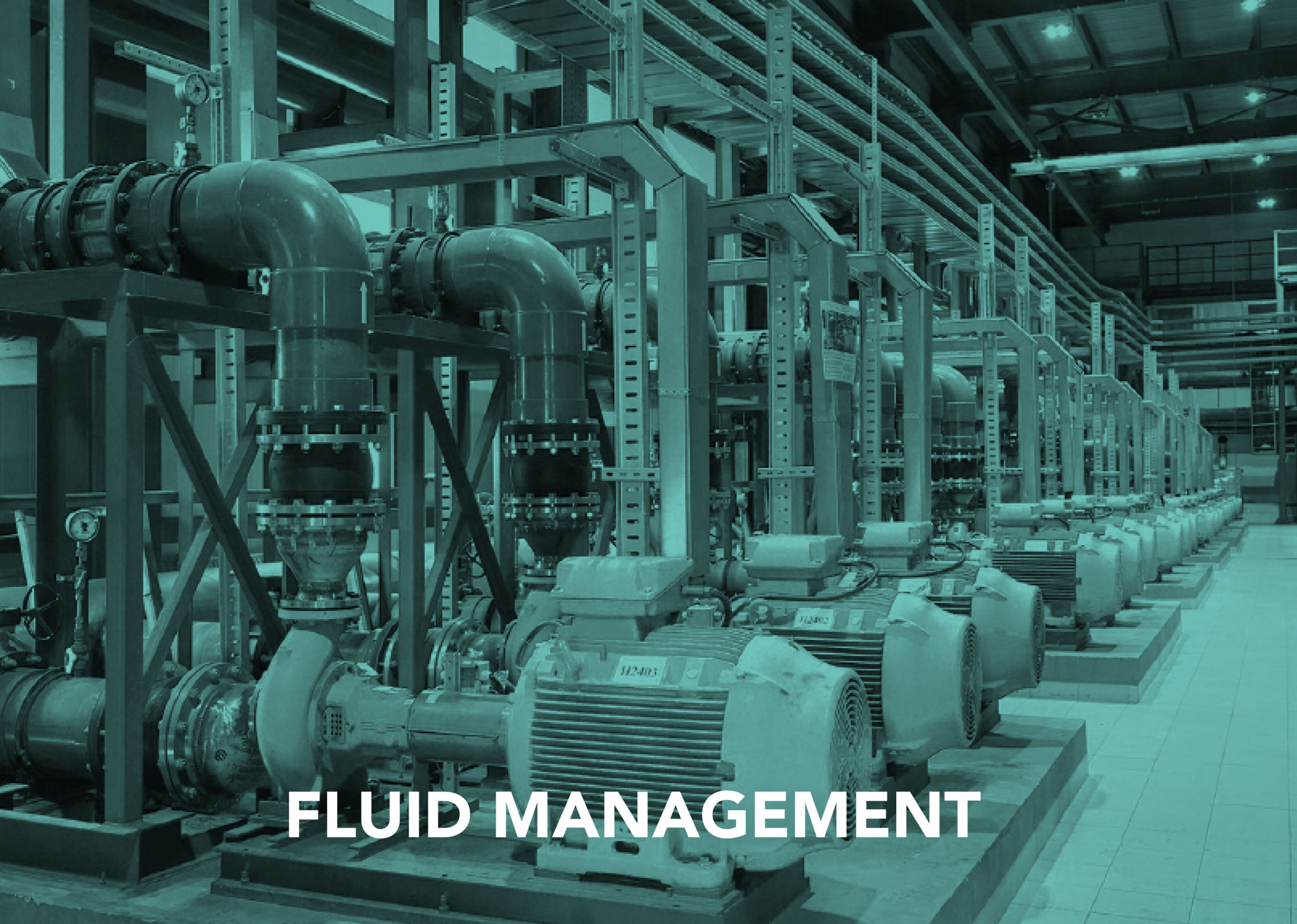


# FPX

SOLUTIONS







**FLUID MANAGEMENT**



# FLUID MANAGEMENT

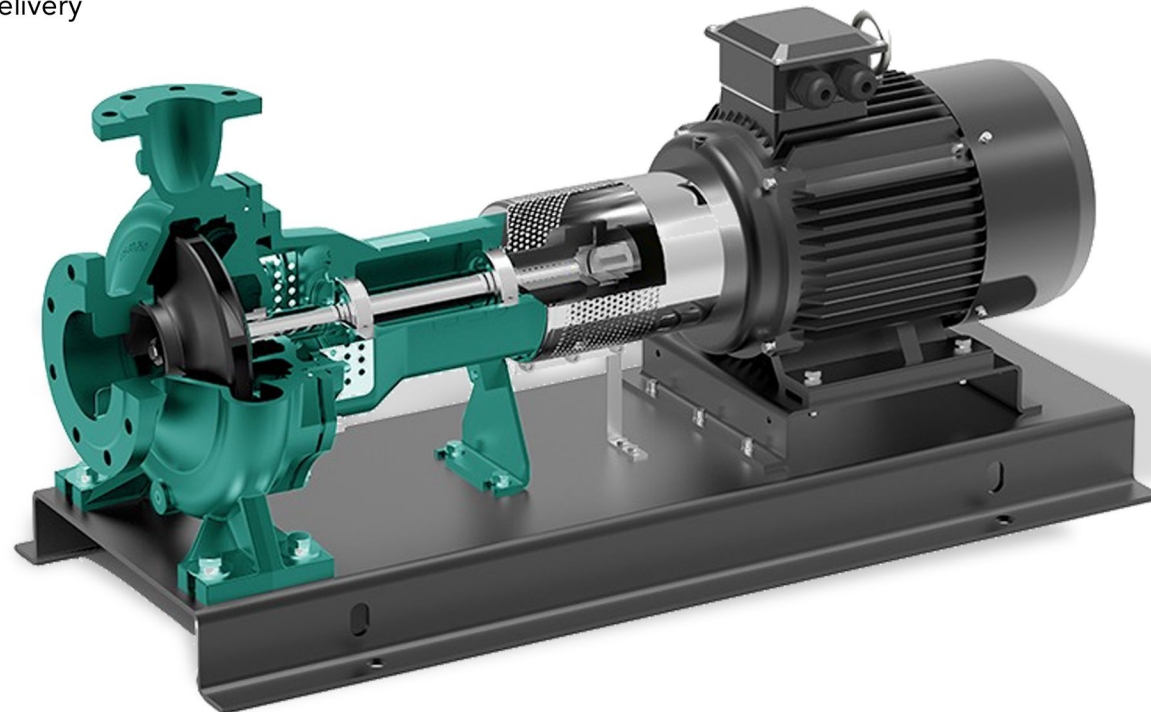
We offer centrifugal pumps, system solutions and services to the specific needs of customers in the respective market segments.

As there are: Environment & Energy, Chemical, Paper, Food, Pharmaceuticals, Mining, and Oil & Gas.

Our service, quality and original parts ensure that the pump in your system operates reliably. Our vast pump installations and customer satisfaction is a testimony to our product reliability. Our multiple production sites ensure parts can be supplied in quick time globally.



Visit our webshop for ex-stock delivery





## End Suction Pumps (FPES)



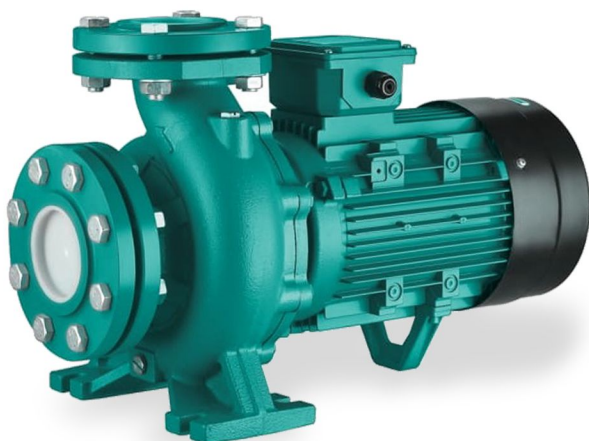
WATER NORM PUMP (FPES)		
	EU	US
FEATURES	End Suction, Back Pull Out , Volute Casing, Radially Split Design	
DN	50 to 300 mm	2" to 12 "
FLOW RATE (Q)	5 to 1500 m <sup>3</sup> /hour	20 to 6600 US gpm
HEAD (H)	4 to 160 m	15 ft to 520 ft
LIQUID TEMPERATURE	105°C	220°F
SPEED	2900 rpm	3500 rpm

## Vertical Inline Pump (FEG)



VERTICAL INLINE PUMP (FEG)		
	EU	US
FEATURES	Vertical Inline, Back Pull Out , Volute Casing, Radially Split Design	
DN	50 to 150 mm	2" to 6 "
FLOW RATE (Q)	5 to 500 m <sup>3</sup> /hour	20 to 2200 USgpm
HEAD (H)	4 to 150 m	15 ft to 500 ft
LIQUID TEMPERATURE	85°C	185°F
SPEED	2900 rpm	3500 rpm

## Monobloc Pump (FST)



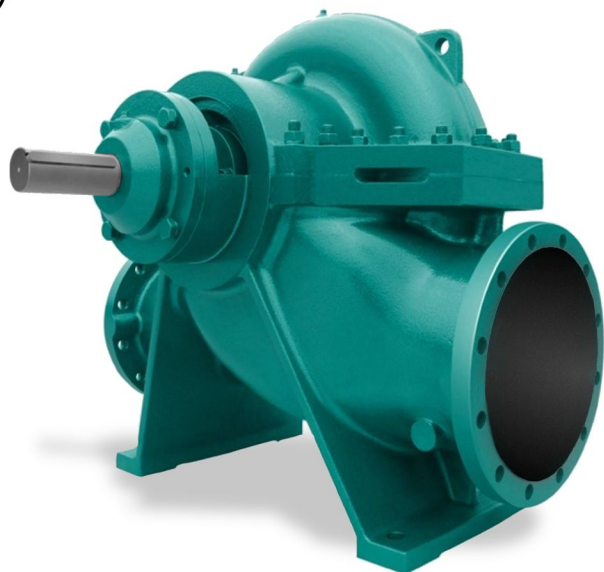
MONOBLOC PUMP (FST)		
	EU	US
FEATURES	End Suction, Monobloc, Volute Casing, Radially Split Design	
DN	32 to 80 mm	1.5" to 3 "
FLOW RATE (Q)	8 to 220 m <sup>3</sup> /hour	35 to 950 USgpm
HEAD (H)	10 to 95 m	30 to 310 ft
LIQUID TEMPERATURE	85 <sup>0</sup> C	185 <sup>0</sup> F
SPEED	2900 rpm	3500 rpm

## Chemical Pumps (FCN)

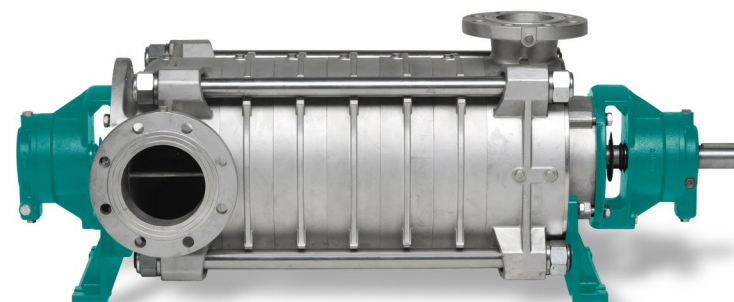


CHEMICAL PUMP (FCN)		
	EU	US
FEATURES	End Suction, Back Pull Out , Volute Casing, Radially Split Design	
DN	50 to 300 mm	2" to 12 "
FLOW RATE (Q)	5 to 1400 m <sup>3</sup> /hour	22 to 6100 US gpm
HEAD (H)	5 to 140 m	18 to 450 ft
LIQUID TEMPERATURE	250 <sup>0</sup> C	480 <sup>0</sup> F
SPEED	2900 rpm	3500 rpm

## Split Case Pump (FSC)



## Multistage Pump (FMS)



SPLIT CASE PUMP (FSC)		
	EU	US
FEATURES	Axially Split Casing, Double or Single Volute Casing, Enclosed Impeller	
DN	50 to 1200 mm	2" to 48 "
FLOW RATE (Q)	30 to 18,000 m <sup>3</sup> /hour	135 to 79,300 US gpm
HEAD (H)	5 to 140 m	18 ft to 450 ft
LIQUID TEMPERATURE	250°C	480°F
SPEED	2900 rpm	3500 rpm

MULTISTAGE PUMP (FMS)		
	EU	US
FEATURES	Radially Split Design, Multistage ,Ring Section Diffuser type	
DN	50 to 200 mm	2" to 8 "
FLOW RATE (Q)	15 to 500 m <sup>3</sup> /hour	70 to 2200 USgpm
HEAD (H)	16 to 640 m	30 to 200 ft
LIQUID TEMPERATURE	85°C	185°F
SPEED	2900 rpm	3500 rpm



## End Suction Pump (ES)



END SUCTION PUMP (ES)		
	EU	US
FEATURES	End Suction, Mixed Flow, Semi Open / Enclosed Impeller, Back Pull Out , Volute Casing	
DN	250 to 600 mm	10" - 24 "
FLOW RATE (Q)	400 to 6000 m <sup>3</sup> /hour	1750 to 26,400 USgpm
HEAD (H)	25 m	85 ft
LIQUID TEMPERATURE	160°C	320°F
MAX. SPEED	1450 rpm	1750 rpm

## Vertical Inline Multistage Pump (FLVS)



VERTICAL INLINE MULTISTAGE PUMP (FLVS)		
	EU	US
FEATURES	Vertical Inline, Multistage	
DN	35 to 150 mm	1 1/4" to 6"
FLOW RATE (Q)	3 to 240 m <sup>3</sup> /hour	15 to 1050 Usgpm
HEAD (H)	10 to 240 m	30 to 787 ft
LIQUID TEMPERATURE	120°C	240°F
MAX. SPEED	2900 rpm	3500 rpm



## Vertical Turbine Pump (FVT)



### Description:

Vertical suspended Vertical Turbine Pumps, Single Or Multistage construction in Axial or Radial and mixed flow design with enclosed, mixed or open impeller design depending on the application.

#### Design Variants:

- Dry pit
- Wet pit
- Below ground discharge
- Above ground discharge
- Pull out design ( Bowl only or complete pump)

#### Flanges:

- BS
- EN
- DIN
- ANSI
- AWWA

VERTICAL TURBINE PUMP (FVT)		
	EU	US
FEATURES	Vertical Suspended, Diffuser, Single / Multistage, Non - Pull Out / Pull Out Design	
DN	50 to 2800 mm	2" to 112 "
FLOW RATE (Q)	20 to 70,000 m <sup>3</sup> /hour	88 to 308,000 USgpm
HEAD (H)	300 m	984 ft
LIQUID TEMPERATURE	60°C	104°F
MAX. SPEED	1500 rpm	1800 rpm

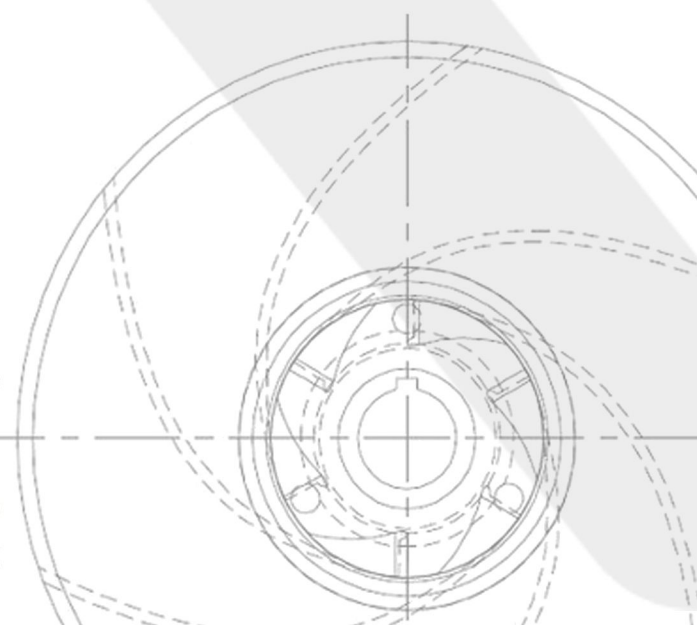


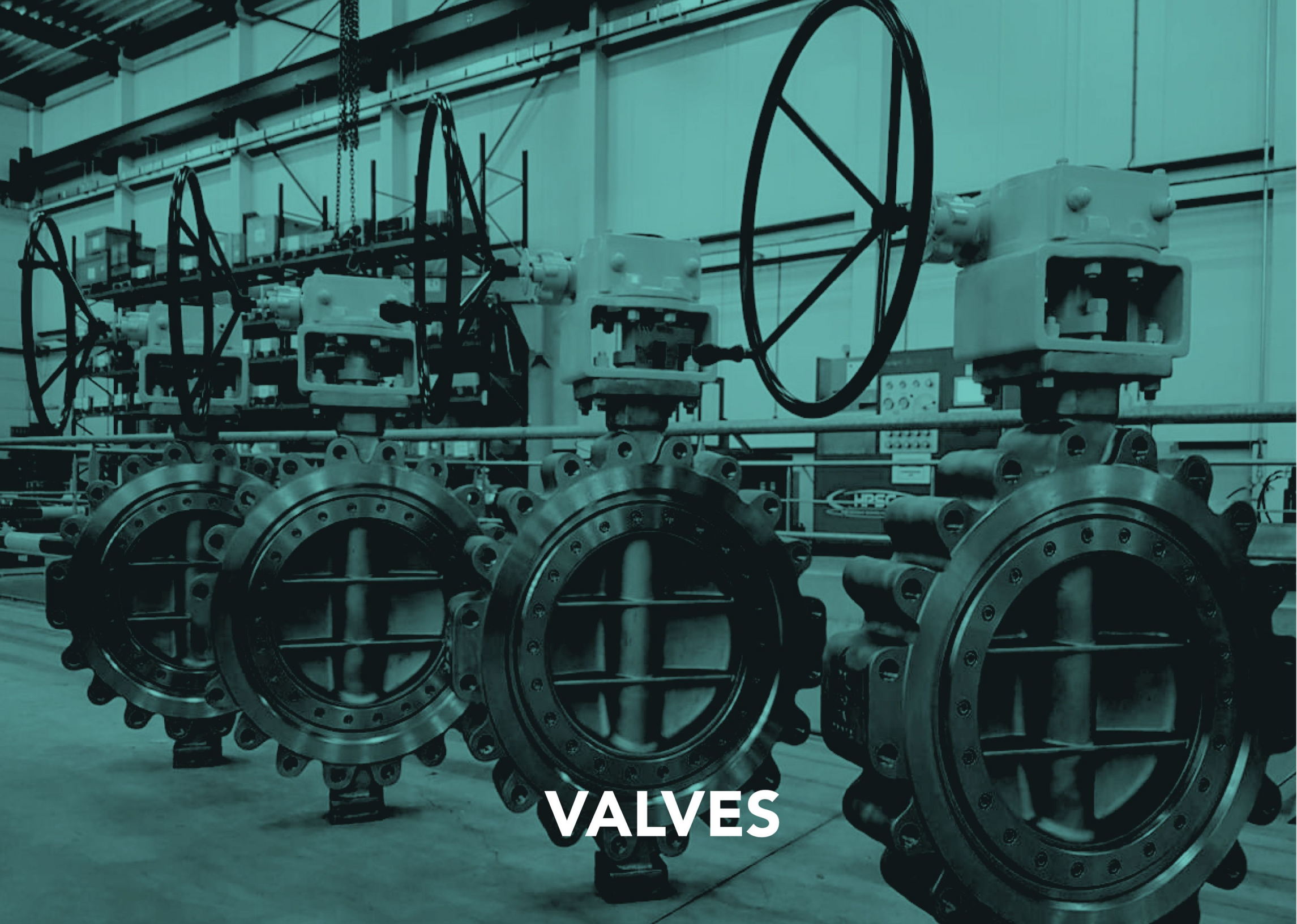
# APPLICATION MATRIX



Visit our webshop for ex-stock delivery

Pump Type	Category	FPX Pump Model	Municipal Clean Water	Municipal treated water	Flood Control	Fertilizer & Chemical Industry	Power Generation	Marine Industry	Water transportation & Irrigation	Pulp & Paper	Mining & Minerals	Genral Industry	Building and construction	Mining & Minerals	District Heating	Firefighting	Page No
End suction	Water Norm	FPES	✓				✓		✓			✓	✓			✓	14
	Chemical Norm	FCN	✓			✓	✓	✓				✓			✓	✓	15
	Mixed flow	ES	✓	✓	✓		✓		✓	✓							17
	Monobloc	FST	✓				✓		✓			✓	✓		✓	✓	15
Split Case		FSC	✓	✓	✓	✓	✓		✓			✓	✓		✓	✓	16
Multistage		FMS	✓			✓	✓				✓	✓	✓	✓	✓	✓	16
Vertical inline	Single stage	FEG	✓				✓	✓				✓	✓			✓	14
	Multistage	FLVS / R	✓									✓	✓			✓	17
Vertical Turbine		FVT	✓		✓	✓			✓			✓				✓	18





**VALVES**





## VALVES

We have a wide range of valves with the design, a large stock available for immediate delivery. We cater to requirements from Water, Oil & Gas, Petrochemical and General Industry.

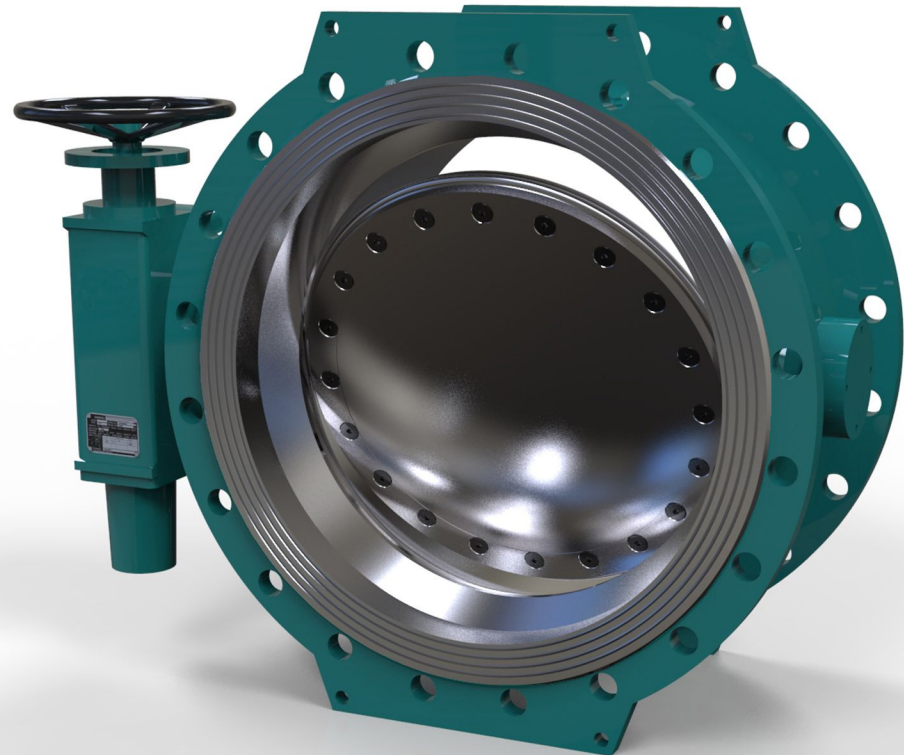
Our products are exported globally from Netherlands.

Our broad range of products includes:

- Butterfly Valves
- Globe Valves
- Gate Valves
- Ball Valves
- Check Valves

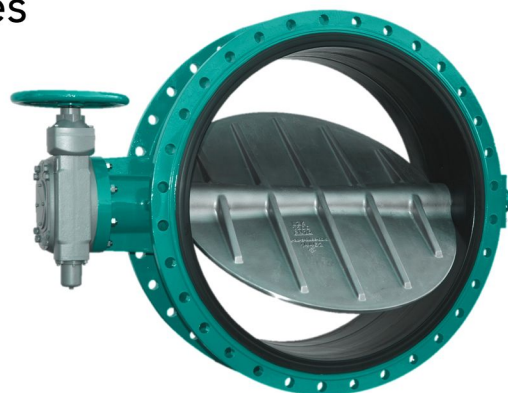


Visit our webshop for ex-stock delivery





## Butterfly Valves



### Rubber Lined Butterfly Valves Centric Disc Design (Wafer/Lug)

Size Range	: 40 NB to 1200 NB
Pressure Rating	: 40 NB to 600 NB-PN20 (max) > 600 NB-PN10 (max)
Temperature Range Operator	: 25 Deg C to 200 Deg C (Depending on material)
Operator	: HL/GB/Pneumatic Actuator/ Electrical Actuator

### Rubber Lined Butterfly Valves Centric Disc Design (Wafer/Lug)

Size Range	: 50 NB to 350 NB
Pressure Rating	: PN 10 (Max)
Temperature	: -25 Deg C to 200 Deg C (D.O.M.) With rubber encapsulated disc.

### Rubber Lined Butterfly Valves Centric Disc Design (Double Flange)

Size Range	: 50 NB to 1200 NB
Pressure Rating	: 50 NB to 600 NB- PN20 (max) >600 NB to 1200 NB-PN10 (max)
Temperature	: -25 Deg C to 200 Deg C (Depending on material)
Operator	: HL/GB/Pneumatic Actuator/ Electrical Actuator

## Gate and Globe Valves



### Gate Valve

Bolted Bonnet, Pressure Seal Bonnet, Outside Screw & Yoke,  
Manual Operated / Chain Wheel Operated / Motorised,  
Position Indicator / Limit Switches / Extended Bonnet /  
Extended Stem

Size Range	: 50NB to 1200NB
Pressure Rating	: #150 , #300, #600, #900, #1500, #2500
Trim	: All API Trim material available

### Globe Valve

Bolted Bonnet, Pressure Seal Bonnet, Outside Screw & Yoke ,  
Manual Operated / Motorised, Extended Bonnet /  
Extended Stem

Size Range	: 50NB to 500NB
Pressure Rating	: #150 , #300, #600, #900, #1500, #2500
Trim	: All API Trim material available



## Check and Ball Valves



### Dual Plate Check Valve

(NRV)-Wafer/Lugged/Flanged ends, Spring Loaded Soft Seat,  
Metal Seat / Cast Iron, Steel Body

Size Range	: 50NB to 1200NB
Pressure Rating	: #150, #300, #600
Trim	: All API Trim material available
Cast Iron DPCV	: 50 NB to 450 NB
Rating up to PN 16	

### Check Valves

Swing Check Valve (NRV)- Bolted Cover, Pressure Seal Cover,  
Flange ends Dash pot arrangement for non-slam application,  
Internal arrangement

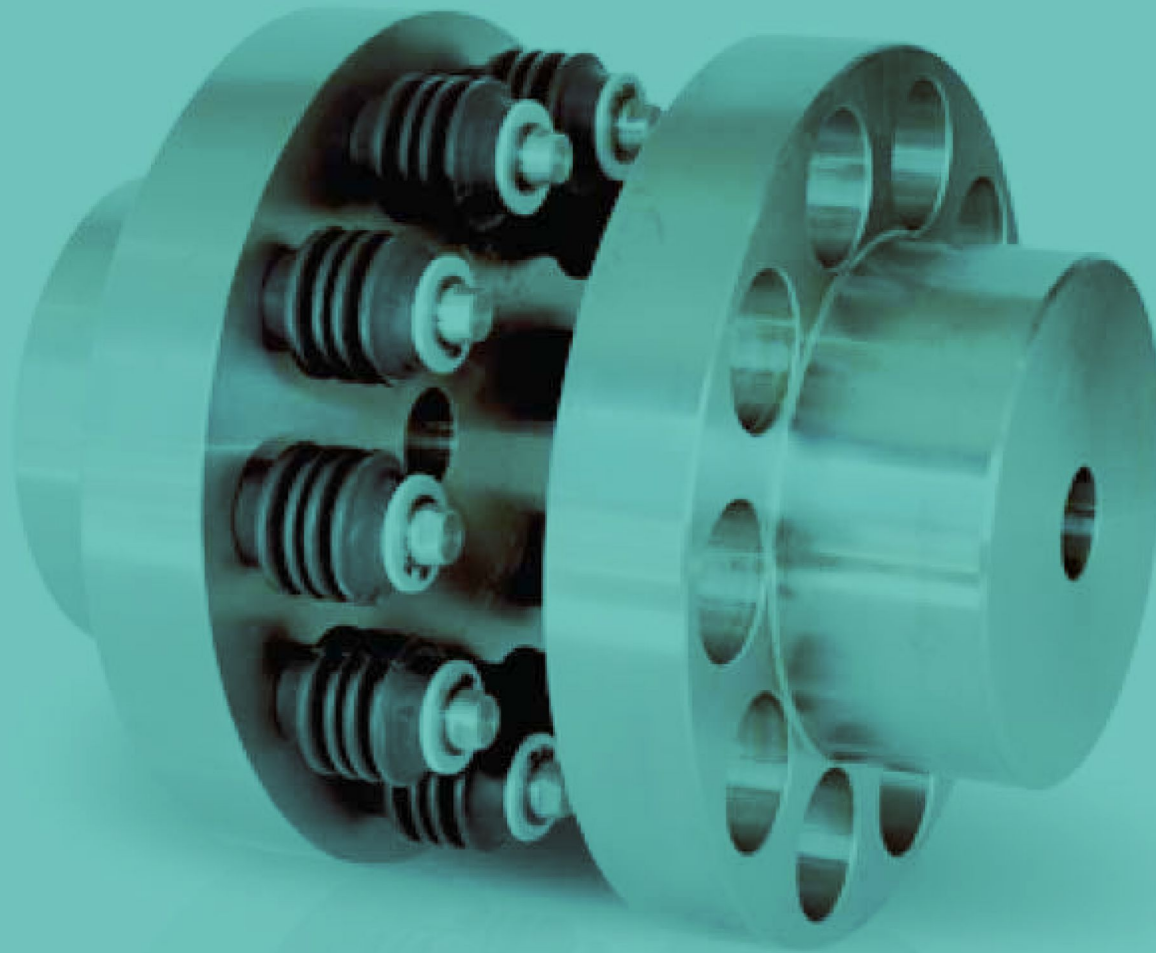
Size Range	: 50 NB to 1200 NB
Pressure Rating	: #150 , #300, #600, #900, #1500, #2500
Trim	: All API Trim material available



### Ball Valves

Trunnion Mounted Ball Valve, 2/3 piece, FB/RB, Flanged ends

Size Range	: 50 NB to 600 NB
Pressure Rating	: #150 , #300, #600
Operator	: Hand lever, Gear Box, Actuator
Material	: Cast Steel, Stainless Steel (special on request)
Seat Material	: PTFE, Devlon, Nylon, Metal seat.



# **MECHANICAL POWER TRANSMISSION**



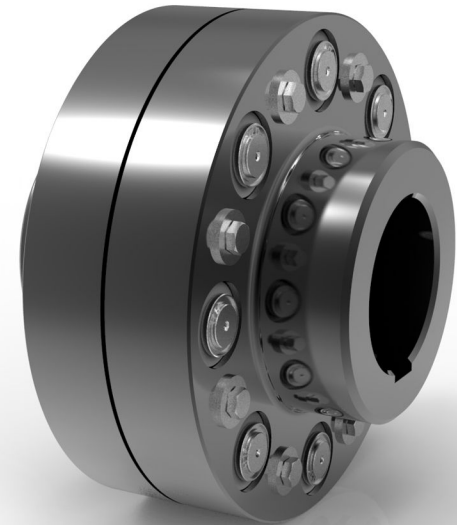
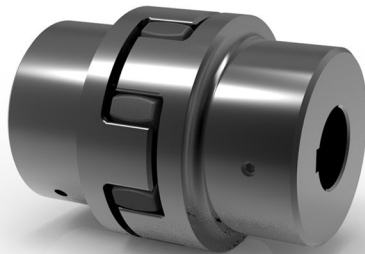


## MECHANICAL POWER TRANSMISSION

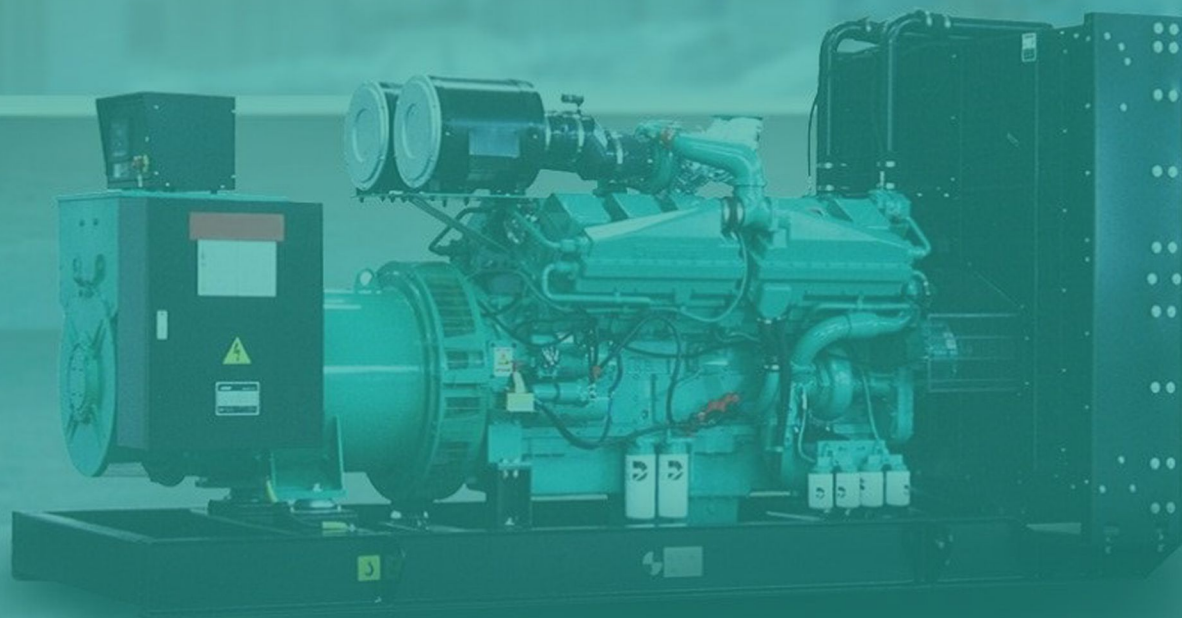
We manufacture a wide range of high quality couplings and supply to rotary equipment manufacturers like Pumps and Compressors globally. We have support of manufacturing the transmission products to the Industrial customers since 1986 & more than 400,000 couplings have been supplied to customers all over the world.

We offer our products listed below to end users, service companies and stockists.

- Universal Joints
- Standard Gear Couplings
- Flexible Disc Couplings
- Pin & Bush Couplings



The coupling and Anti - Vibration Mountings (AVM) can also be supplied with ATEX certification. Design range is available up to 6000 kN and diameter 2200 mm.



# POWER GENERATION

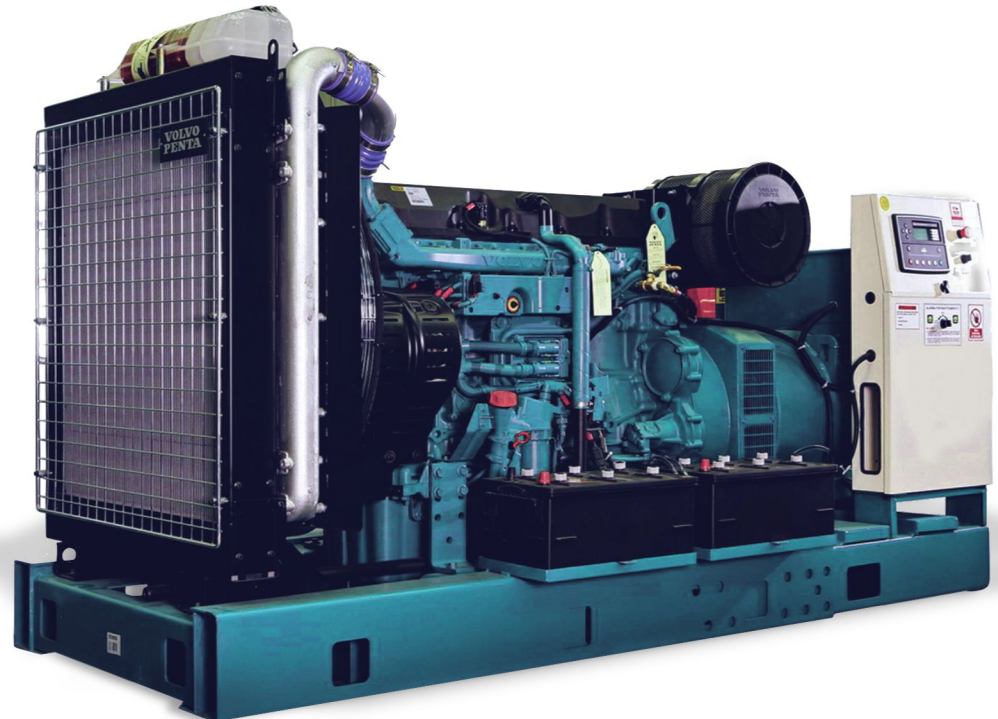
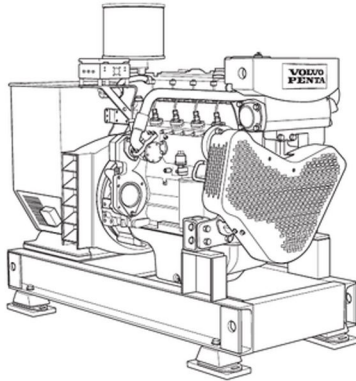




# POWER GENERATION

We help you find The Right Product for your Power Needs.

FPX can offer a wide range of diesel generator sets for a superior power solution through its performance, flexible range of features and ease of serviceability in the field. Our standard product range starts from 5 kVA to 2000 kVA with various variants.





**FPX SOLUTIONS. B.V.**

Stroombaan 10,  
1181 VX Amstelveen,  
The Netherlands.

PHONE : +31 20 722 0898

EMAIL : [sales@fpxsolutions.nl](mailto:sales@fpxsolutions.nl)

WEBSITE : [www.fpxsolutions.com](http://www.fpxsolutions.com)

KVK / Chamber of Commerce: 75460335

BTW / VAT number: NL860291248B01



Visit our webshop for ex- stock delivery products



**THE NETHERLANDS**

Head Office  
Manufacturing Plant  
Field Services

**DUBAI, U.A.E**

Assembly Facility  
Field Services

**USA**

Field Services







**Copyright © FPX Solutions B.V.**

This brochure is a general company / product presentation. It does not provide a warranty or guarantee of any kind. Please, contact us for a description of the warranties and guarantees offered with our products. Directions for use and safety will be given separately. All information herein is subject to change without notice.