



INDUSTRIAL PUMP EQUIPMENT

TULA PUMPING EQUIPMENT PLANT

Company overview

NK KRON is a manufacturer and a packaging company of pumping equipment for a range of industries in Russia and the CIS.

COMPANY PROFILE

- Year of establishment — 1992.
- Plant location — Tula.
- Head office — Moscow.
- Total personnel — 70 employees.
- The company produces pump units of its own design and also complements the production line with units made on the basis of pumps from other manufacturers.
- Its production capacity ensures production of more than 300 pump packages per year.
- In total, the Company produced and sold more than 1000 pump units.

KEY CONSUMERS

- The Company products meet market requirements for wide range of end users including food, beverage, power with focus on in oil and gas production and processing, petrochemical and chemical industries.
- The corporate client base amounts to 200+ end consumers.

EXPERIENCE

- Company management more than 20 years works in the field of pump construction.
- More than 60% of the staff has specialized higher education.



Certificates and licenses

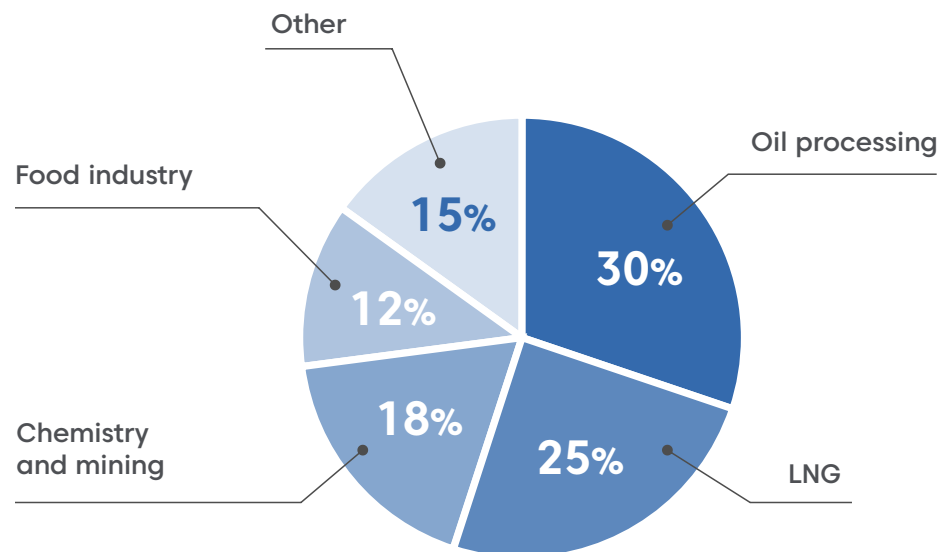
NK Kron possesses all permits and licenses required for the production and supply of pumping equipment, including for hazardous industrial facilities. All personnel of the company regularly undergo the necessary training and certification.

ISO 9001 & ISO 14001 Certification

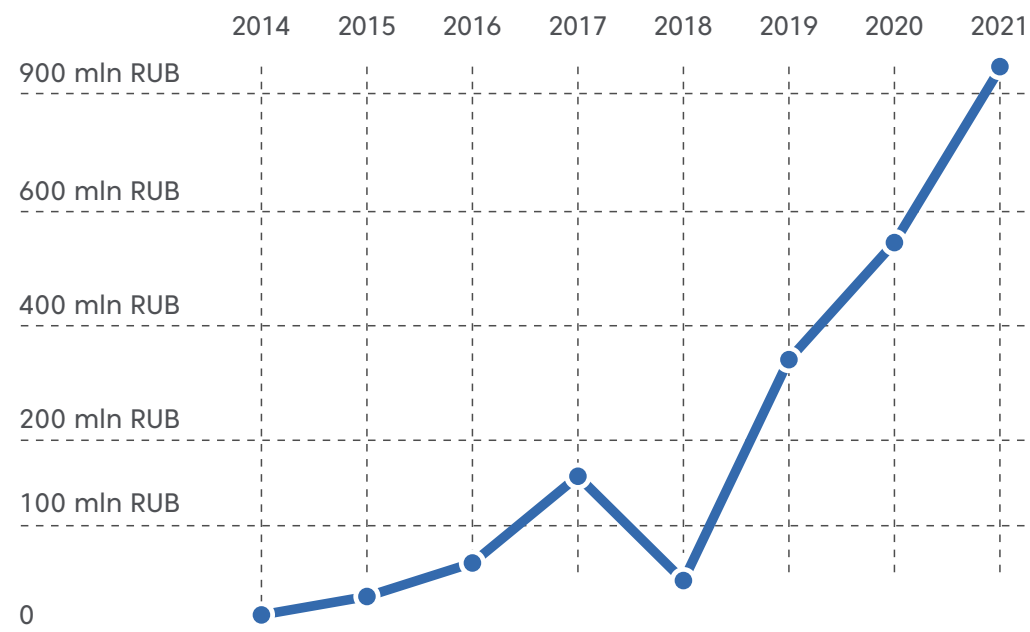


Consumers and annual revenue

Consumers by industry, 2021



Revenue by years



* Steady growth suspended in 2018
(due to long delivery times on high-profile cases)

Installation base

Kazan Oil Extraction Plant OJSC

Kuibyshev Refinery

Lukoil-Nizhegorodnefteorgsintez

NIIR JSC

YaroslavlNefteorgsintez

Acron Novgorod

Keystone Logistics

NOVATEK Ust-Luga LLC

Ivangorod Protelux

RNRC

Yamal LNG

GIAP JSC

Kristall LLC

Coralaina Engineering LLC

Catalyst System Service LLC

JUTRON production

Varnitsa LLC

Mozyr Refinery

Shchekinoazot JSC

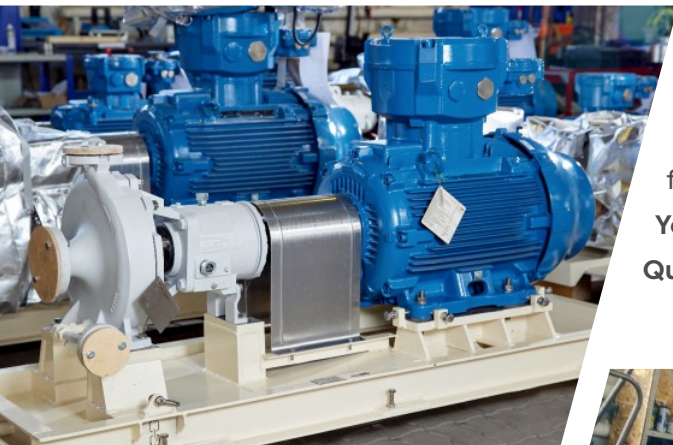
Efremov Synthetic Rubber Plant, OJSC

* Deliveries throughout Russia and CIS



Reference Sheet 1/6

Performed deliveries of pumping equipment in 2021-2023



Arctic LNG 2 LLC

Horizontal centrifugal MNHA pump units based on Flowserve Mark 3 for pumping methanol

Year of supply: 2021

Quantity: 20



Slavyansk Eco LLC

Horizontal centrifugal pump units MNHI based on Flowserve Mark 3 for hot oil pumping

Year of supply: 2021

Quantity: 6

Yamal LNG JSC

MNHI horizontal centrifugal pump units based on Flowserve Mark 3 for methanol pumping

Year of supply: 2021

Quantity: 12



Arctic LNG 2 LLC

Flowserve WXB Horizontal Intermounted Multistage Dual-Stage Pump Units

Year of supply: 2021

Quantity: 3



Reference Sheet 2/6

Performed deliveries of pumping equipment in 2021-2023



Slavyansk Eco LLC

Flowserve HPX horizontal centrifugal pump units for thermal oil pumping

Year of supply: 2021

Quantity: 2



Orsknefteorgsintez PJSC

Horizontal multistage pump units MNS based on Flowserve MSM for pumping feed water

Year of supply: 2021

Quantity: 2



Slavyansk Eco LLC

CT MAG-M horizontal centrifugal pump units for pumping propane-butane mixtures

Year of supply: 2021

Quantity: 2



Kristall LLC

Horizontal multistage pump units MNS-P based on Flowserve MSH for water pumping

Year of supply: 2021

Quantity: 1

Reference Sheet 3/6

Performed deliveries of pumping equipment in 2021-2023

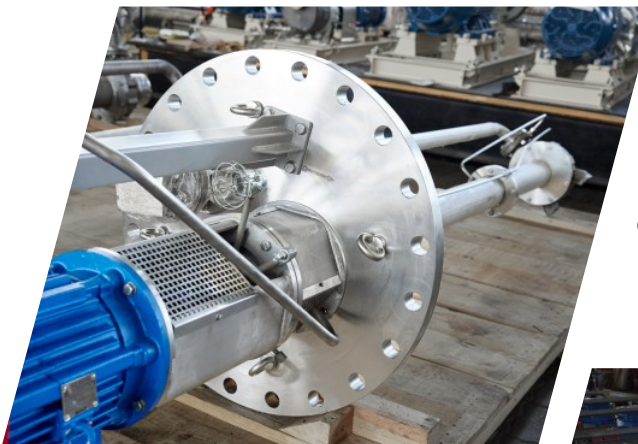


Arctic LNG 2 LLC

MHXA cantilever units OH-2 type
for methanol pumping

Year of supply: 2021

Quantity: 12



Arctic LNG 2 LLC

Vertical semi-submersible
pump units type VS-1 for
pumping water-methanol
mixture

Quantity: 4



Kristall LLC

Horizontal multistage pump units
MNS for pumping diesel fuel and
boiler feed

Year of supply: 2021

Quantity: 3

Vertical semi-submersible pump
units type VS-4 for pumping
water-methanol mixture

Quantity: 17

Year of supply: 2021



Reference Sheet 4/6

Performed deliveries of pumping equipment in 2021-2023



Slavyansk Eco LLC

CT MAG-M horizontal centrifugal pump units for pumping propane-butane mixtures

Year of supply: 2021

Quantity: 2

Slavyansk Eco LLC

Viking QS4224A gear pump unit for pumping butam with WEG motor gearbox

Year of supply: 2021

Quantity: 1



PJSC Nizhnekamsk-neftekhim

Horizontal centrifugal pump unit MNHI 50-32-125 based on Flowserve Mark 3 for pumping of pyrocondensate

Year of supply: 2021

Quantity: 1

GDK Baimskaya LLC

Modular block pumping and compressor station for raw water based on pump units MNS and MNH units

Year of supply: 2021

Quantity: 3



Reference Sheet 5/6

Performed deliveries of pumping equipment in 2021-2023



Kazakhmys Corporation LLP

Unit with e-SV centrifugal pumps,
type UCNB

Year of supply: 2022

Quantity: 1



Kazakhmys Corporation LLP

Installation of drinking water
supply for the working village
GDC Baimskaya on the basis of
cantilever pumps MNHI

Year of supply: 2022

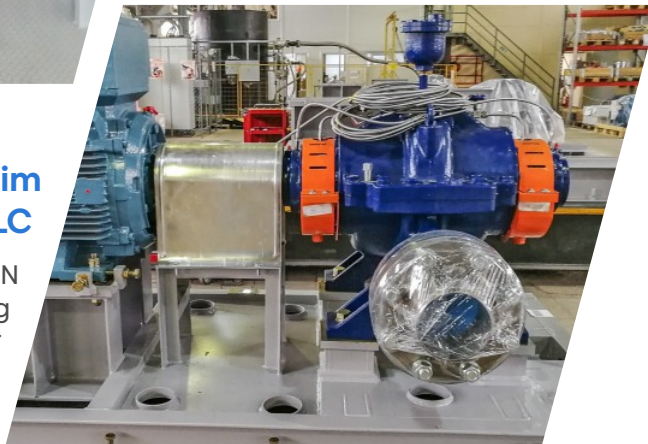
Quantity: 1

Gazprom Neftekhim Salavat LLC

Pumping unit type BB1 MMN
6x5x10 for pumping
service water

Year of supply: 2022

Quantity: 1



Slavyansk Eco LLC

Vertical semi-submersible pump
units HVC 80-50-200 based
on Flowserve CPXV
for diesel fuel transfer

Year of supply: 2022



Reference Sheet 6/6

Performed deliveries of pumping equipment in 2021-2023



NOVATEK Ust-Luga, LLC

Raw material pump
H-302AB

Year of supply: 2021

Quantity: 1



Lukoil-Volgograd- neftepererabotka LLC

Screw pump unit
BHX 180x16-200

Year of supply: 2023

Quantity: 1

Afipsky Oil Refinery LLC

Centrifugal pump unit model
MMP 10x6-17

Year of supply: 2023

Quantity: 1



Slavyansk Eco LLC

Centrifugal pump unit type OH-2
model MHXA 8x6-18

Year of supply: 2023

Quantity: 1

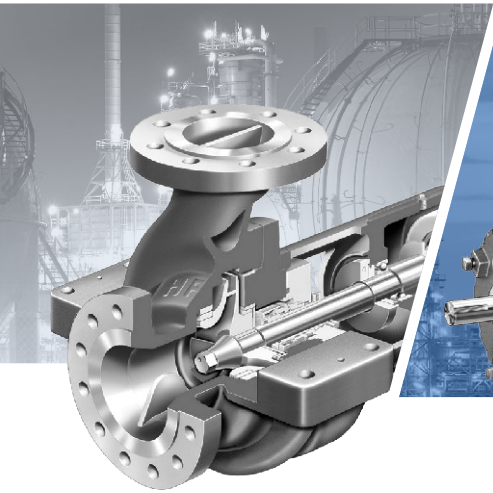


Key customers



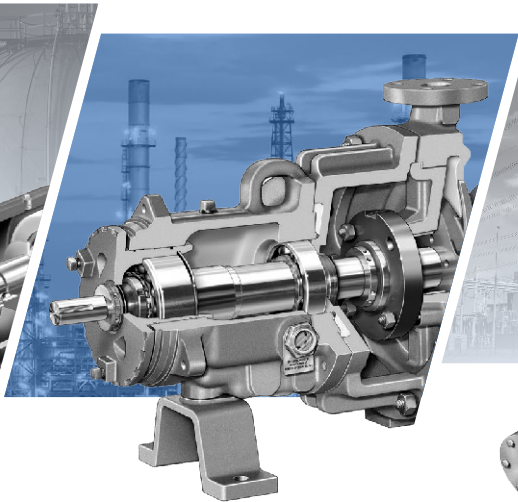
Product lines

The product line is divided into products fully manufactured in Russia and pump units assembled on the basis of pump parts from suppliers from Korea, Italy, India and China. All suppliers have extensive international experience and reference list.



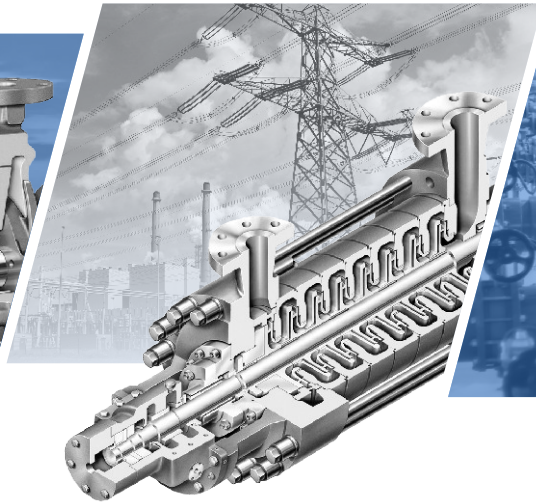
OIL PUMPS BY API-610 STANDARD

MHXA, MBH, MMH,
MMP, HBK



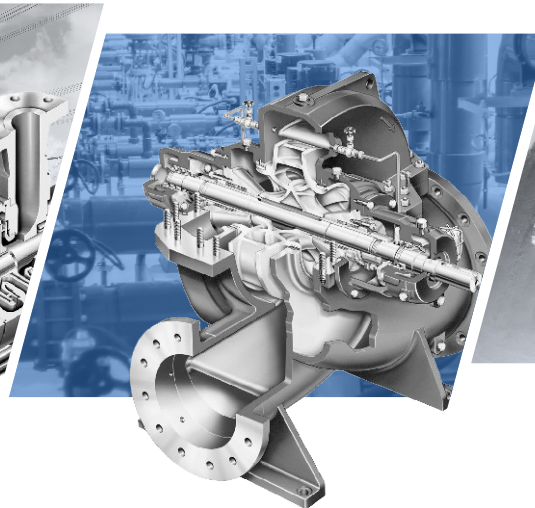
CHEMISTRY AND GENERAL INDUSTRY

MHX, MHC, MHXЛ,
HBK



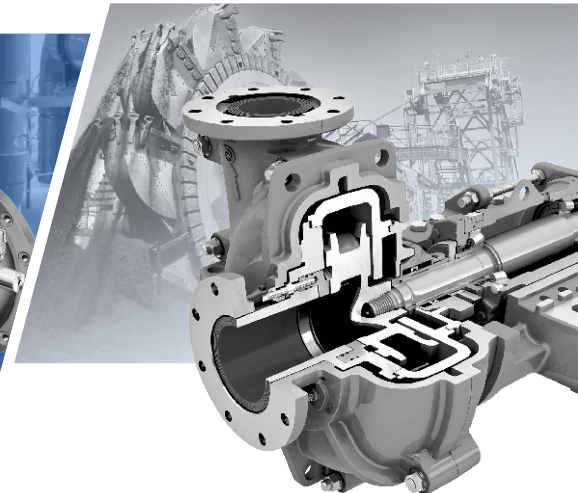
POWER INDUSTRY

MHC, MHX, HBK



WATER SUPPLY

N Series,
MHX, MMP



MINING INDUSTRY

MHШ

Why it's easy to work with us

Competitive prices

Due to the use of pump parts of the highest quality, Russian assembly and the use of Russian and foreign components without additional trade margins.

Certified components

All components have Russian approvals, certificates, calibration certificates and service support in Russia and the CIS.

Compliance with Russian standards

Russian pump units are supplied in accordance with the requirements of Russian standards with the provision of appropriate documentation.

Service support

Service support by Russian specialists in cooperation with global centers of excellence in pump construction and repair.

Experience

Extensive experience of management and employees, including international EPC projects. Documentation and correspondence both in Russian and English.

Project support

Providing preliminary drawings for the design of the construction part when placing an order.



**IN 2016-2017
THE COMPANY
MADE A STRATEGIC DECISION
TO COOPERATE WITH THE
WORLD LEADER IN THE PRODUCTION
OF PUMPING EQUIPMENT OVER THE YEARS WE
HAVE ACCUMULATED COMPETENCIES, WHICH
ALLOWED US TO TRANSFER PART
OF PRODUCTION TO RUSSIA AND ESTABLISH
A CHAIN OF SUPPLY CHAIN TO ENSURE
FULFILLMENT OF CONTRACTS
EVEN IN THE MOST
UNFAVORABLE
RESPONSIBILITIES**

Production site

Fully equipped to successfully package and repair of pump units

DESCRIPTION

Production capacity – 300 pumping units.

Total area:

- Land Plot — 11 000 m²;
- Workshop — 4500 m²;
- Warehouse — 600 m²;
- Office — 700 m².

Production areas:

- input control zone;
- shot blasting;
- paint booth;
- warehouse;
- assembly areas;
- testing;
- packaging.

KEY EQUIPMENT

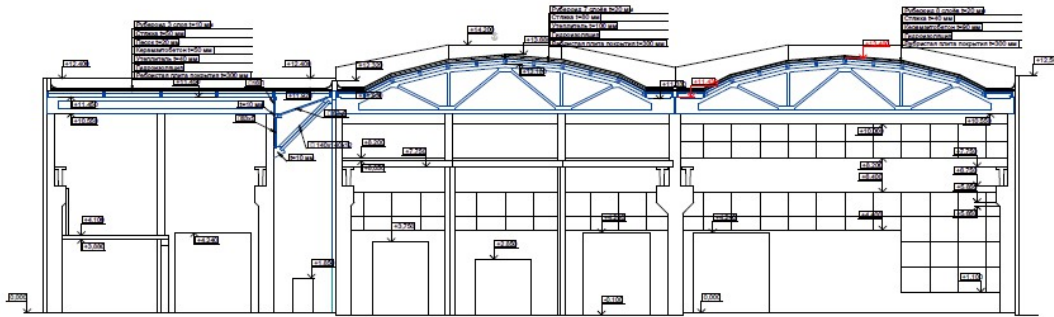
- Fully staffed incoming inspection area (including PMI, balancing);
- Mechanical processing;
- Welding stations and equipment (NAKS certified);
- Balancing bench;
- Paint room;
- Centering devices;
- Balancing machine;
- Assembly stations;
- Crane beams – up to 32 t.

Certified hydraulic test rig for complete pump unit (start-up date 12/2020).

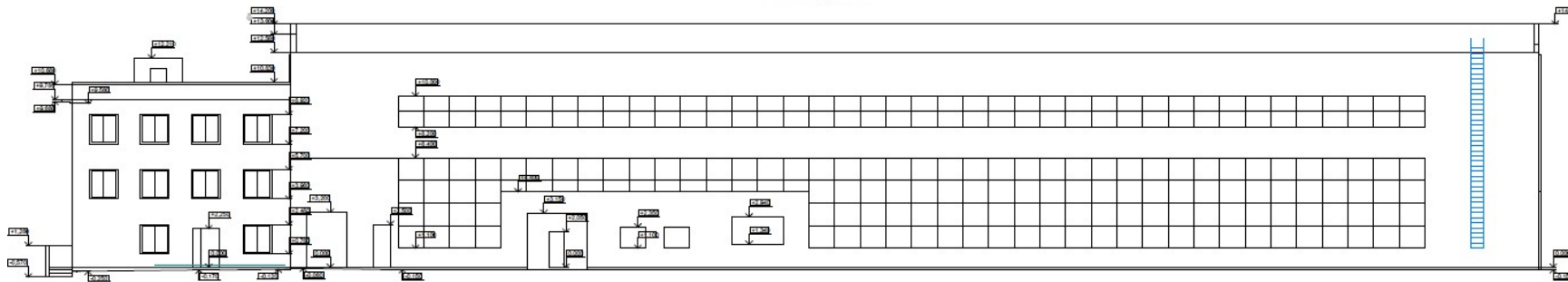


Production site

Разрез 1-1



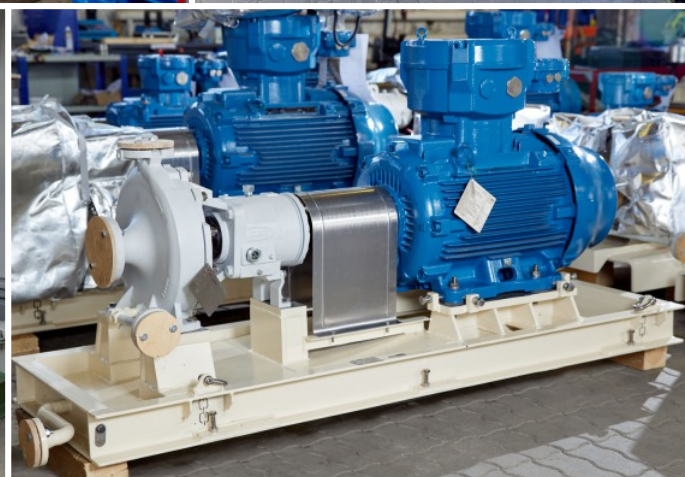
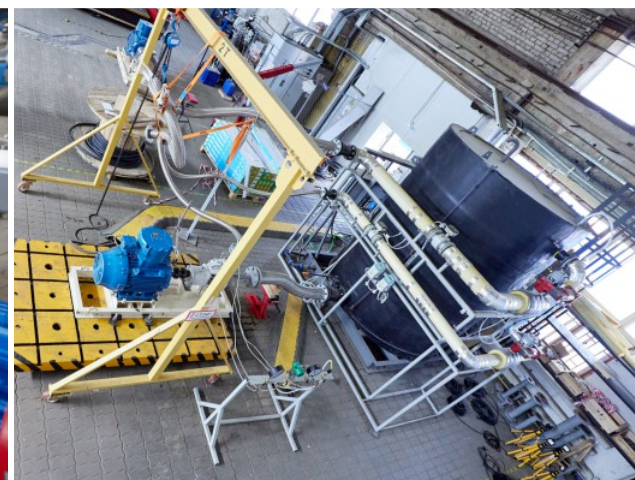
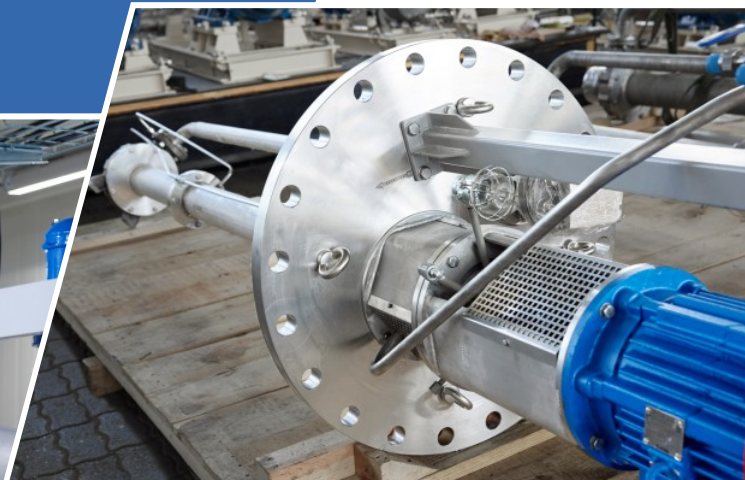
Фасад 1-17



Site in Tula

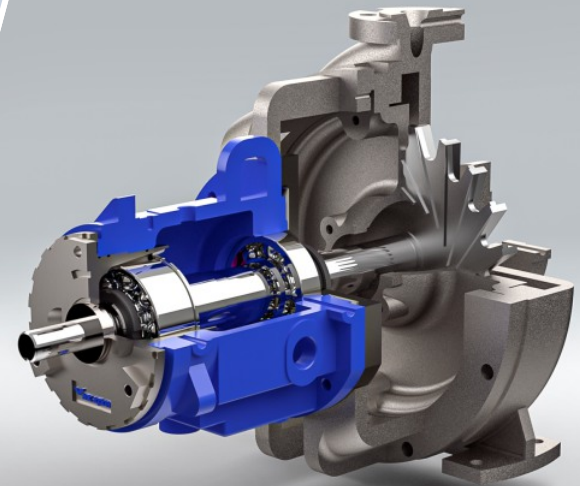
- Land plot – 11 000 m²;
- Workshops – 4500 m²;
- Office space – 700 m².

Our production



Development

The design department of NK Kron is equipped with all necessary programs for 3D design of pump units, as well as 3D scanning and reverse engineering in case it is necessary to produce proven hydraulics for the customer.



Receiving components in stock

100% utilization of component barcoding ensures traceability of each pump unit component and operational information about the stages of production.



Input control

All incoming components undergo incoming inspection for dimensional and material conformity to ensure that only the highest quality components are used.



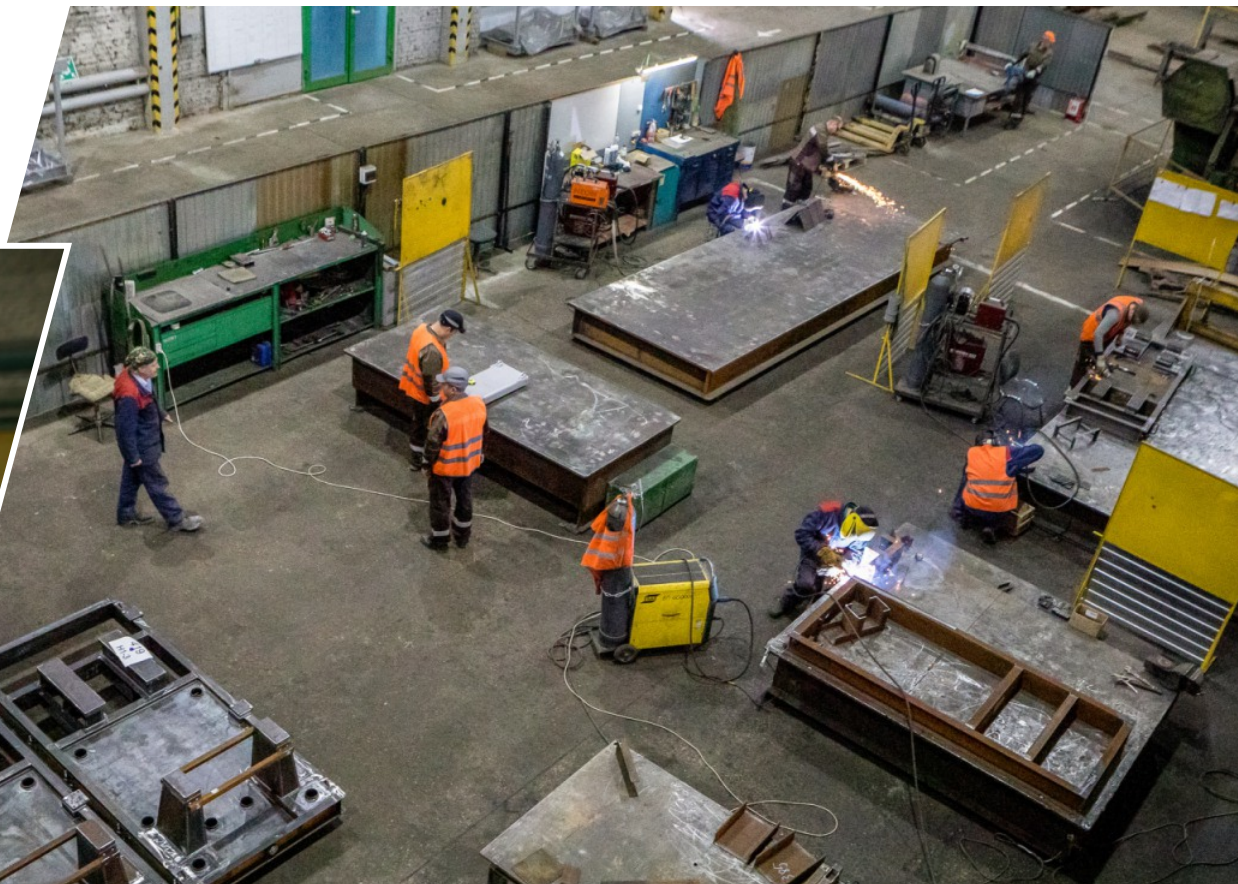
Material Preparation

Working only with proven suppliers and materials with all necessary certificates allows us to be confident in the mechanical properties of our products.



Assembly unit frames

All welding equipment, technology, and welders undergo mandatory inspections and NAKS certifications.



Visual and Measurement Inspection

Visual and measuring inspection - one of the methods of nondestructive testing, which is carried out by means of the simplest measuring tools (magnifying glass, tape measure, caliper, etc.) With its help you can detect: corrosion lesions, cracks, flaws in the material and surface treatment.



Ultrasonic, color flaw detection, radiography

All products are 100% inspected, additional tests can be carried out at the customer's request.



Welding of pipelines

The use of robotic welding complexes guarantees the highest quality of the seam at high speed of work independent of the characteristics of the individual welder. All technology is certified according to NAKS.



Shot blasting

Shot blasting has a significantly lower environmental impact while providing excellent surface preparation for various types of painting. The size of the blast cabinet allows large-sized parts to be blasted in one operation.



Pump rotor balancing

All pumps are subjected to a comprehensive inspection, in particular the balancing of the rotor assembly along with the use of a heavy duty series of bearings ensures low vibration levels and as a consequence extended overhaul interval and life of the pump unit as a whole.



Coloring

Paint systems developed in cooperation with paintwork manufacturers and painting in a chamber that allows working with large-sized parts guarantee long-term durability of the coating even under the most severe operating conditions.



Assembly pumping units

3D design and the use of intermediate inspection points, along with the control of the movement of each component, allows for the shortest possible assembly times for units with guaranteed quality.



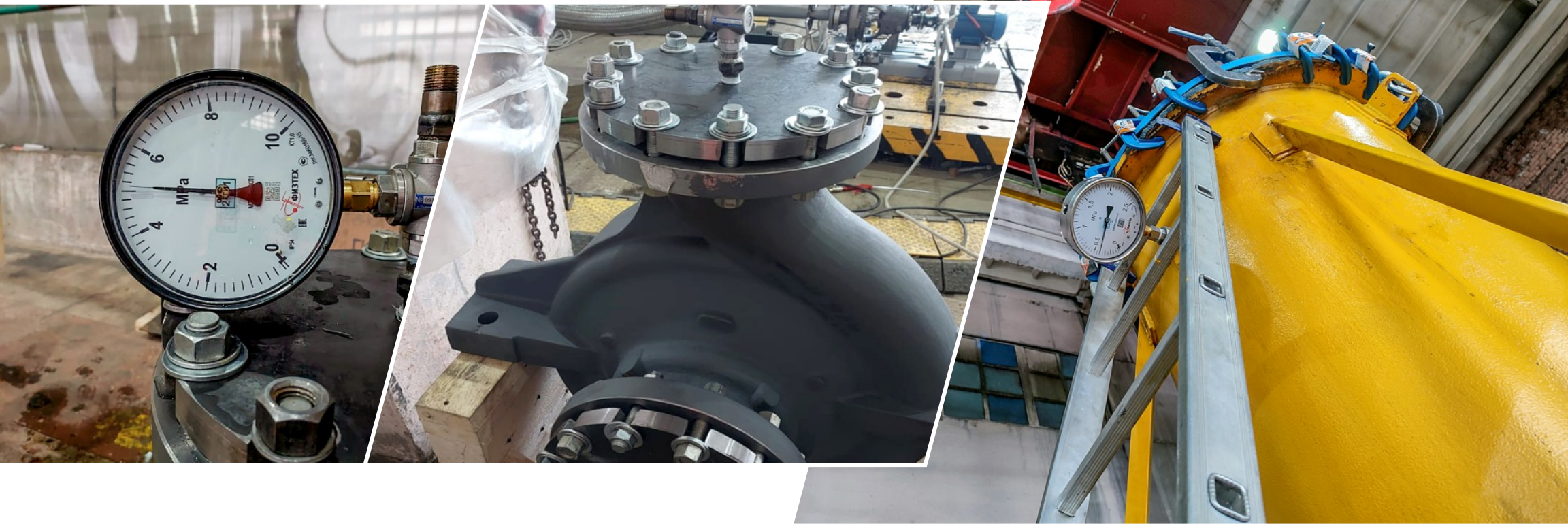
Hydraulic testing

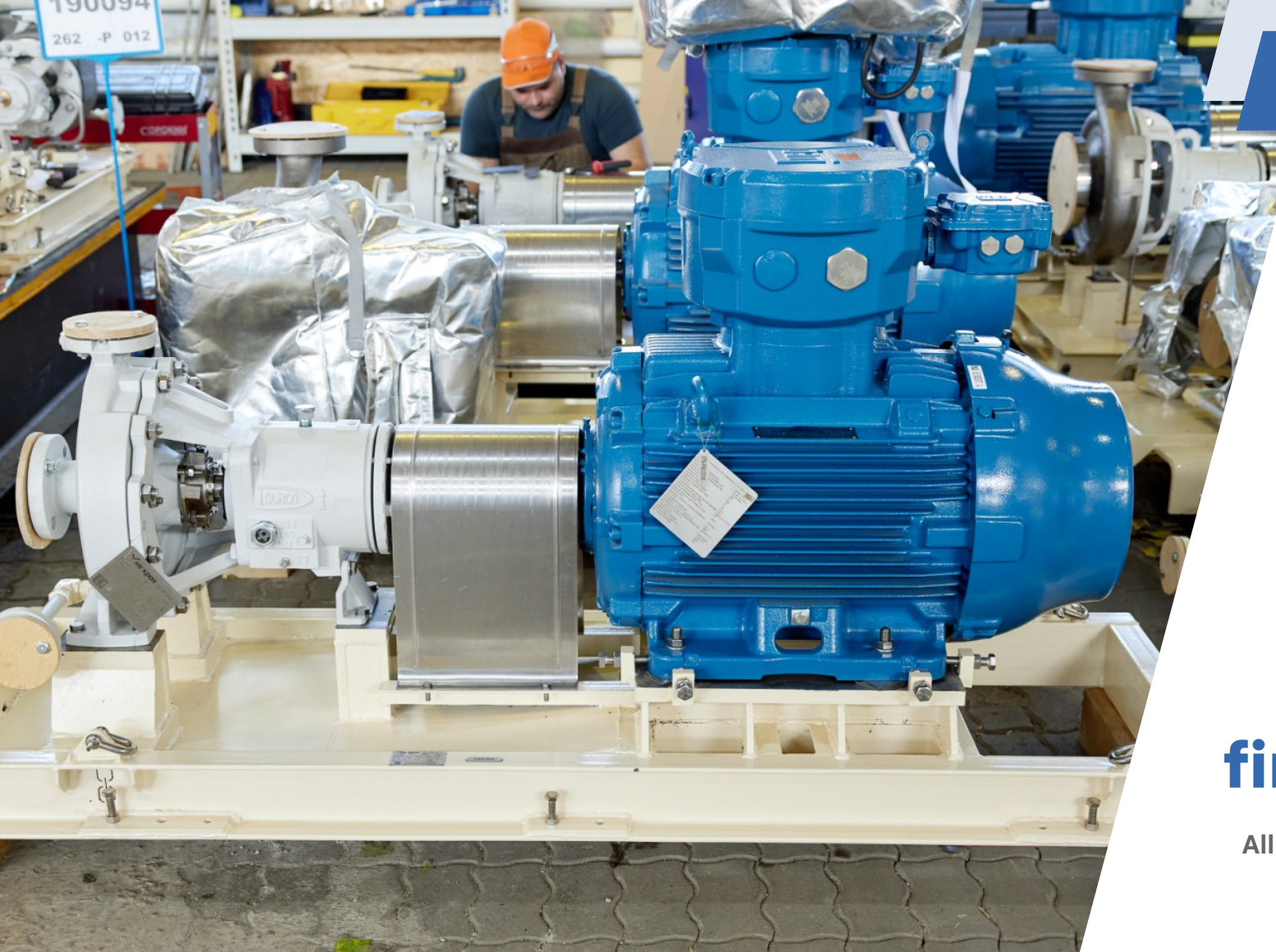
The accuracy class 1 certified test bench allows both parametric and running tests of pump units.



Pressure test

As required by international standards, all pumps are pressure-tested to ensure that they are free from casting and assembly defects.





Output control finished products

All finished products are tested according
to the requirements of ISO9001.

Packaging and shipping



Our own packaging shop allows us to produce any type of packaging on customer's request.



NK Kron LLC

RU-117105, Moscow, Varshavskoe Shosse 33, floor 10
Tel .: +7 (499) 371-03-10

**E-mail: info@kron-pump.ru
www.kron-pump.ru**